



# IMMOTION Occupancy kit

Getting Started

# Contents

## Sensor gateway

Receives data from the counters, and interprets this.

Adding timestamps to data.

## Micro computer

This is where the GUI is generated and allows for a HDMI connection on any compatible screen.

## Counters

Can be used with a variety of counters,

Wireless standard counters, overhead counters, or occupancy counters



The occupancy kit contains the following.

- 1x Sensor Network Gateway (SNG)
- 1x Micro computer
- 1x set counters(transmitter and receiver)
- 1x power supply micro computer
- 1x ethernet cable
- 4x AA 1,5V batteries
- 1x screwdriver
- 1x magnetic alignment key
- 2x locking screws



# Step 1: Configuration of sensors

Guide

# Step 1

## Sensor gateway and Counter configuration

Before using the occupancy kit it is required (if it is not a pre configured kit) to learn in the counters into the sensor gateway.

Connect the Sensor gateway to a windows pc and start the tool



Before using the occupancy kit it is required (if it is not a pre configured kit) to learn in the counters into the sensor gateway.

The immotion SNG tool that is required to learn in the counters can be downloaded from our website.

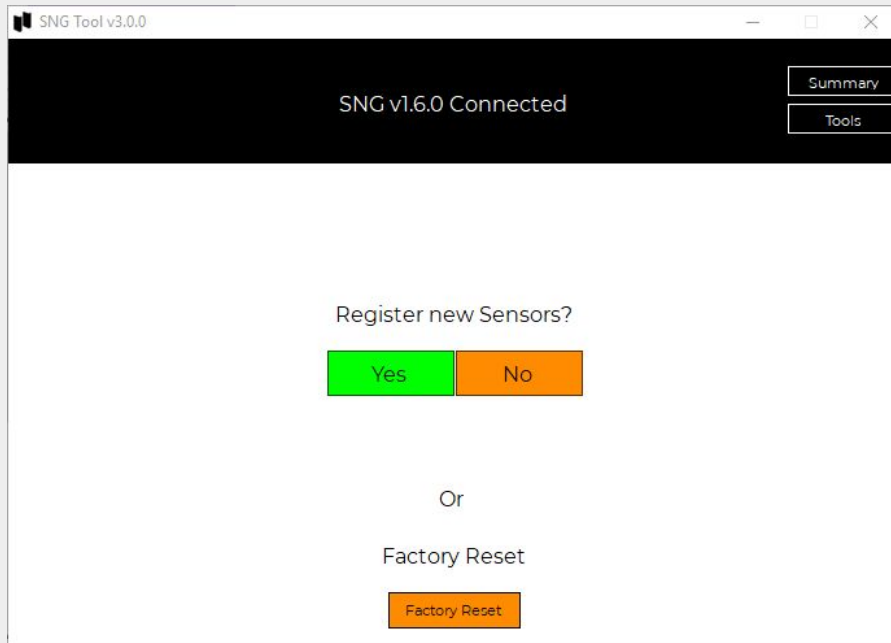
The following link will allow u to download the tool directly.

**<https://www.sdinternational.nl/downloads/immotion/SNG%20Tool%20v3.0.0.exe>**

# Step 1

## Sensor gateway and Counter configuration

When asked if you want to register new sensors press YES



Before using the occupancy kit it is required (if it is not a pre configured kit) to learn in the counters into the sensor gateway.

The immotion SNG tool that is required to learn in the counters can be downloaded from our website.

The following link will allow u to download the tool directly.

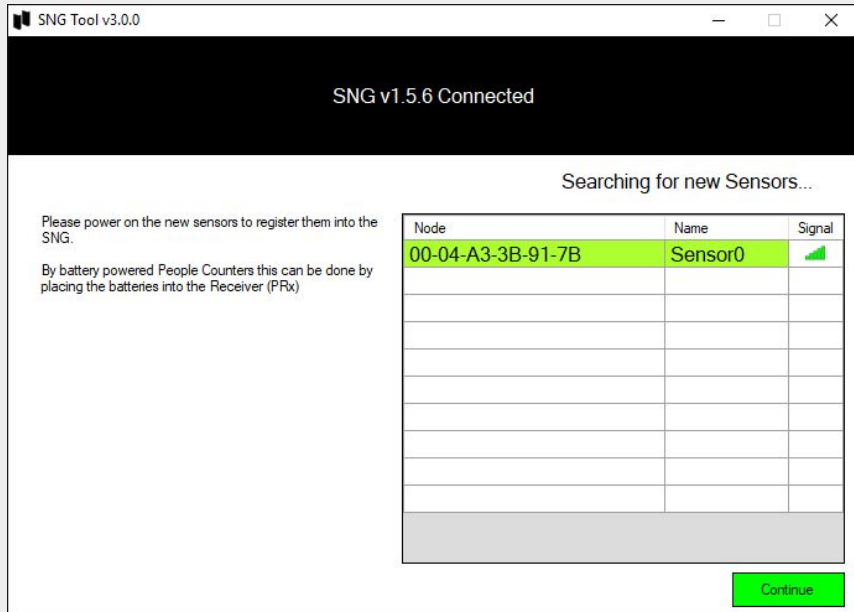
**<https://www.sdinternational.nl/downloads/immotion/SNG%20Tool%20v3.0.0.exe>**

# Step 1

## Sensor gateway and Counter configuration

Place the batteries in the Receiver, if done correctly the sensor will appear in the list as shown below and press the continue button.

If your sensor is not showing up in the list remove the batteries and try again



Before using the occupancy kit it is required (if it is not a pre configured kit) to learn in the counters into the sensor gateway.

The immotion SNG tool that is required to learn in the counters can be downloaded from our website.

The following link will allow u to download the tool directly.

<https://www.sdinternational.nl/downloads/immotion/SNG%20Tool%20v3.0.0.exe>

# Step 1

## Sensor gateway and Counter configuration

A location code in is mandatory our suggestion would be to just enter 1.  
You can now press the save button and continue, no further configuration is required on this schreen.

Node	Version	Sensors	Name	Position Code	Delete
00-04-A3-3B-91-7B	2.3	Counter_A	Sensor0	Pos0	X



Before using the occupancy kit it is required (if it is not a pre configured kit) to learn in the counters into the sensor gateway.

The immotion SNG tool that is required to learn in the counters can be downloaded from our website.

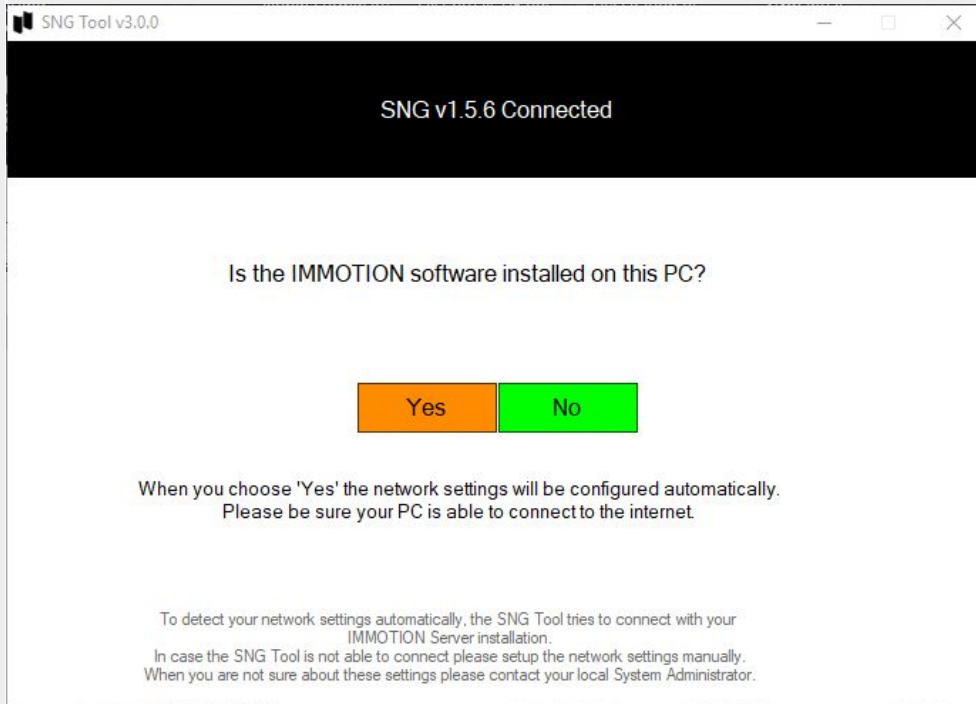
The following link will allow u to download the tool directly.

<https://www.sdinternational.nl/downloads/immotion/SNG%20Tool%20v3.0.0.exe>

# Step 1

## Sensor gateway and Counter configuration

On the Following screen you will press NO.



Before using the occupancy kit it is required (if it is not a pre configured kit) to learn in the counters into the sensor gateway.

The immotion SNG tool that is required to learn in the counters can be downloaded from our website.

The following link will allow u to download the tool directly.

**<https://www.sdinternational.nl/downloads/immotion/SNG%20Tool%20v3.0.0.exe>**

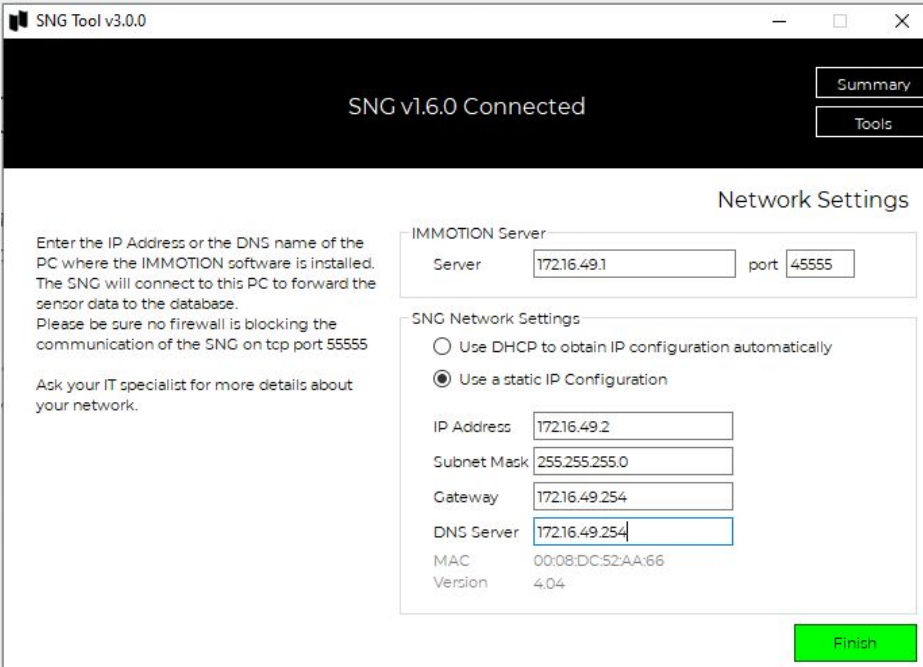


# Step 1

## Sensor gateway and Counter configuration

Use the settings on screen in your configuration.

It is important that the settings are identical to the ones in the image.



The screenshot shows the SNG Tool v3.0.0 configuration window. The title bar reads "SNG Tool v3.0.0". The main content area has a black header with "SNG v1.6.0 Connected" and two buttons: "Summary" and "Tools". Below this is the "Network Settings" section. On the left, there is instructional text: "Enter the IP Address or the DNS name of the PC where the IMMOTION software is installed. The SNG will connect to this PC to forward the sensor data to the database. Please be sure no firewall is blocking the communication of the SNG on top port 55555. Ask your IT specialist for more details about your network." The "IMMOTION Server" section has a "Server" field with "172.16.49.1" and a "port" field with "45555". The "SNG Network Settings" section has two radio buttons: "Use DHCP to obtain IP configuration automatically" (unselected) and "Use a static IP Configuration" (selected). Below are fields for "IP Address" (172.16.49.2), "Subnet Mask" (255.255.255.0), "Gateway" (172.16.49.254), and "DNS Server" (172.16.49.254). At the bottom, there are fields for "MAC" (00:08:DC:52:AA:66) and "Version" (4.04). A green "Finish" button is at the bottom right.



Before using the occupancy kit it is required (if it is not a pre configured kit) to learn in the counters into the sensor gateway.

The immotion SNG tool that is required to learn in the counters can be downloaded from our website.

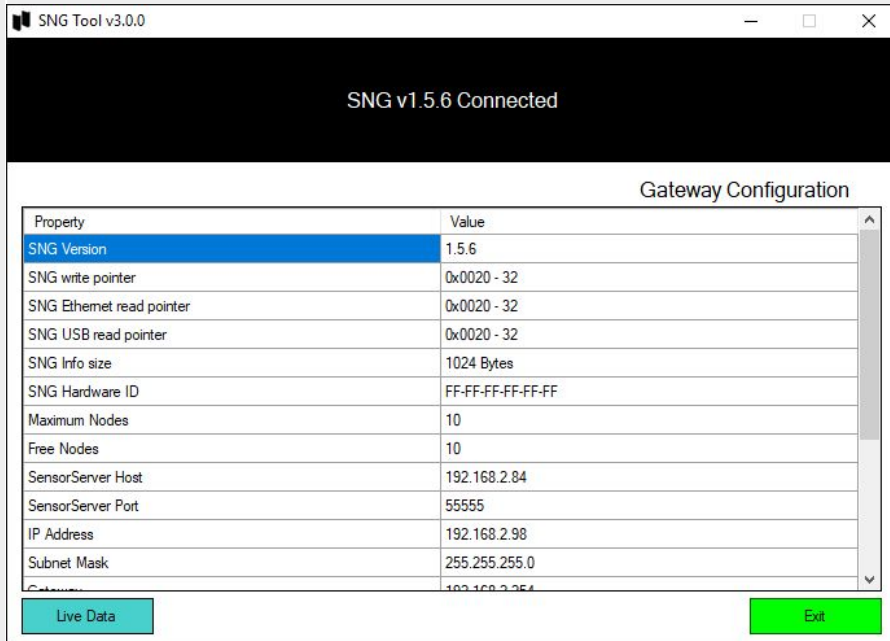
The following link will allow u to download the tool directly.

**<https://www.sdinternational.nl/downloads/immotion/SNG%20Tool%20v3.0.0.exe>**

# Step 1

## Sensor gateway and Counter configuration

On the next screen you can find a quick overview just press exit to conclude the sensor configuration.



The screenshot shows the SNG Tool v3.0.0 interface. At the top, it displays "SNG v1.5.6 Connected". Below this is a table titled "Gateway Configuration" with the following data:

Property	Value
SNG Version	1.5.6
SNG write pointer	0x0020 - 32
SNG Ethernet read pointer	0x0020 - 32
SNG USB read pointer	0x0020 - 32
SNG Info size	1024 Bytes
SNG Hardware ID	FF-FF-FF-FF-FF-FF
Maximum Nodes	10
Free Nodes	10
SensorServer Host	192.168.2.84
SensorServer Port	55555
IP Address	192.168.2.98
Subnet Mask	255.255.255.0
Gateway	192.168.2.254

At the bottom of the interface, there are two buttons: "Live Data" (cyan) and "Exit" (green).



Before using the occupancy kit it is required (if it is not a pre configured kit) to learn in the counters into the sensor gateway.

The immotion SNG tool that is required to learn in the counters can be downloaded from our website.

The following link will allow u to download the tool directly.

**<https://www.sdinternational.nl/download/s/immotion/SNG%20Tool%20v3.0.0.exe>**



# Step 2: Occupancy kit Installation

Guide

# Step 2

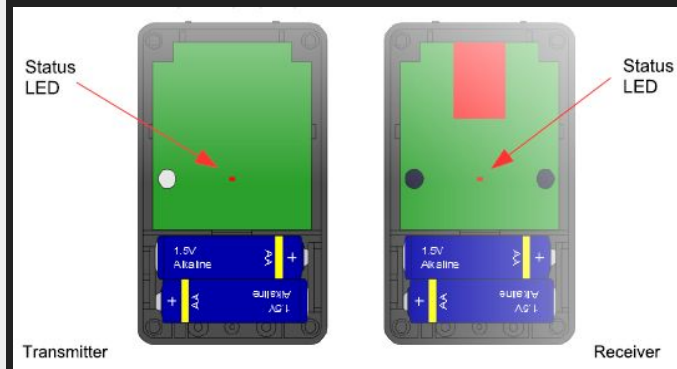
## Occupancy kit installation

- \*Place the batteries in the transmitter and receiver.
- \*Lock the front covers with a screw(included)
- \*Mount the Receiver on the left of the doorway when entering the room, we recommend a height of 140cm.
- \*Swipe the Magnetic alignment key over the top of the receiver.
- \*now hold the transmitter at the intended mounting position across the receiver.
- \*If the Status LED on the receiver turns GREEN it is save to mount the transmitter.(Make sure you are not blocking the IR signal)
- \*if the LED blinks or Turns RED, you need to adjust the positioning of the Transmitter.



The occupancy kit contains the following.

- 1x Sensor network gateway
- 1x Micro computer
- 1x set counters(transmitter and receiver)
- 1x power supply micro computer (white)
- 1x power supply Sensor network gateway (black)
- 1x ethernet cable
- 4x AA 1,5V batteries
- 1x screwdriver
- 1x magnetic alignment key
- 2x locking screws



# Step 2

## Occupancy kit installation

- \*Connect the micro pc and the Sensor Gateway with the Ethernet cable.
- \*Plug the white power supply in the micro pc
- \*Plug the USB cable to the micro pc and the Sensor Network Gateway
- \*Plug the HDMI cable from your monitor into the micro pc.<sup>(1)</sup>
- \*Plug the power supply into a mains outlet.

*To setup the Live screen you can connect a USB keyboard and mouse for control. This can be disconnected after configuration.*



The occupancy kit contains the following.

- 1x Sensor network gateway
- 1x Micro computer
- 1x set counters(transmitter and receiver)
- 1x power supply micro computer (white)
- 1x ethernet cable
- 4x AA 1,5V batteries
- 1x screwdriver
- 1x magnetic alignment key
- 2x locking screws

1: A HDMI cable and monitor are not included



# Step 3: Configuration of Screen information

Guide

# Step 3

## Configuration of screen information

Adjust the settings according to your needs. After saving the Live screen will be loaded

### Configuration

Maximum number of people allowed within the area

+1
+10
+100
3
-100
-10
-1

Show Occupancy

Header message

Welcome message

Welcome info

Please wait message

Please wait info

Save configuration and go live



### Please note:

The very first time the computer is started it will automatically show the Configuration screen.

The text fields can contain some variable values. You can enter one of the following phrases within your text.

#### **%left%**

will show the remaining people allowed to enter, according to the configuration.

#### **%occupancy%**

will show the current amount of people inside.



# Live view

Example



# Live view example (German)



## Notes:

In case there is no data the screen will be black until data is collected.

You can always go to the configuration screen by clicking on the IMMOTION Icon in the top left corner.

The occupancy values are automatically reset every day at midnight.

